



“ May your walls know joy, May every room hold laughter, and every window open to great possibility ”

- Marry Anne Radmache -



## PAXCELL STORY

---

Paxcell is a construction and consultation company based in Sri Lanka providing strategic technical solutions for Civil, Electrical, Mechanical, Electronic and Chemical engineering industries. Having experience in remarkable global engineering practices, we are well equipped with highly qualified chartered engineers, architects and other professionals to bring the most reliable and sustainable solutions for our clients. Our organizational culture depicts some of the most valuable professional disciplines in the industry to ensure that our policies are always followed and objectives are achieved when delivering outcomes for stakeholders. Those disciplines include programs, procedures, practices, resources, tools and equipment as well as rules, responsibilities, relationships, etc.

## INNOVATIVE LIVING BY PAXCELL DESIGNER HOMES

---

Paxcell Designer Homes have been making dreams into reality with the expertise of construction industry professionals for many years. Paxcell team is equipped with highly qualified and experienced chartered engineers, chartered architects, project managers and quantity surveyors who are well versed in bringing customer satisfaction by building them exactly what they have imagined.

Having diversified experiences internationally in many segments within the construction industry, Paxcell team is always in line with the latest advancements in the industry. Whatever the customer needs, innovative living, eco-friendly living, contemporary living or luxury living, Paxcell team is able to attend to every one of these requests because of the vast knowledge and exposure the team possess.

"I believe that every family deserves to live the way they want. In an area they want, in a house that was taken straight out of their dreams. We at Paxcell have one philosophy in mind when we design and build a home for our client; we would love to live there too. With this simple philosophy in mind, we are able to bring exceptional homes to life and to give the client exactly what they have always dreamt about"

Managing Director  
Dr. I. S. W. Pathirana,





## WHEN YOU BUILD WITH PAXCELL DESIGNERS HOMES

When you choose to build your dream home with Paxcell Designer Homes, we know exactly how to preserve your imagination.

You will be in the hands of Paxcell professionals from consultations on the soil on your land to the final furnishings of your finished home. Paxcell is well stocked with all kinds of individuals who possess the skills to attend to every kind of consultation, advice and action you may need. From structural engineers to interior architects, all the professionals will be attending to your home as if it was their own.

When you sign your building agreement with Paxcell as your builder, we know exactly how to value the trust you put in us through your signature. You will be agreeing to a fixed price contract after the design is done as per your requirement. The responsible and professional team of Paxcell will be with you in every step of the way and even after finishing the project with a defect liability period of one year.





## CONTENTS

---

HOME DESIGN	AREA (Sq.Ft)
01. Moon Flower	3487 Sq.Ft
02. Camelia	3612 Sq.Ft
03. Belladonna	4528 Sq.Ft
04. Primrose	2253 Sq.Ft
05. Snowdrop	2710 Sq.Ft
06. Lilac	3620 Sq.Ft
07. Acacia	3040 Sq.Ft
08. Cassia	1982 Sq.Ft
09. Heather	3074 Sq.Ft
10. Aster	1909 Sq.Ft
11. Laurel	2779 Sq.Ft
12. Briar Rose	4735 Sq.Ft

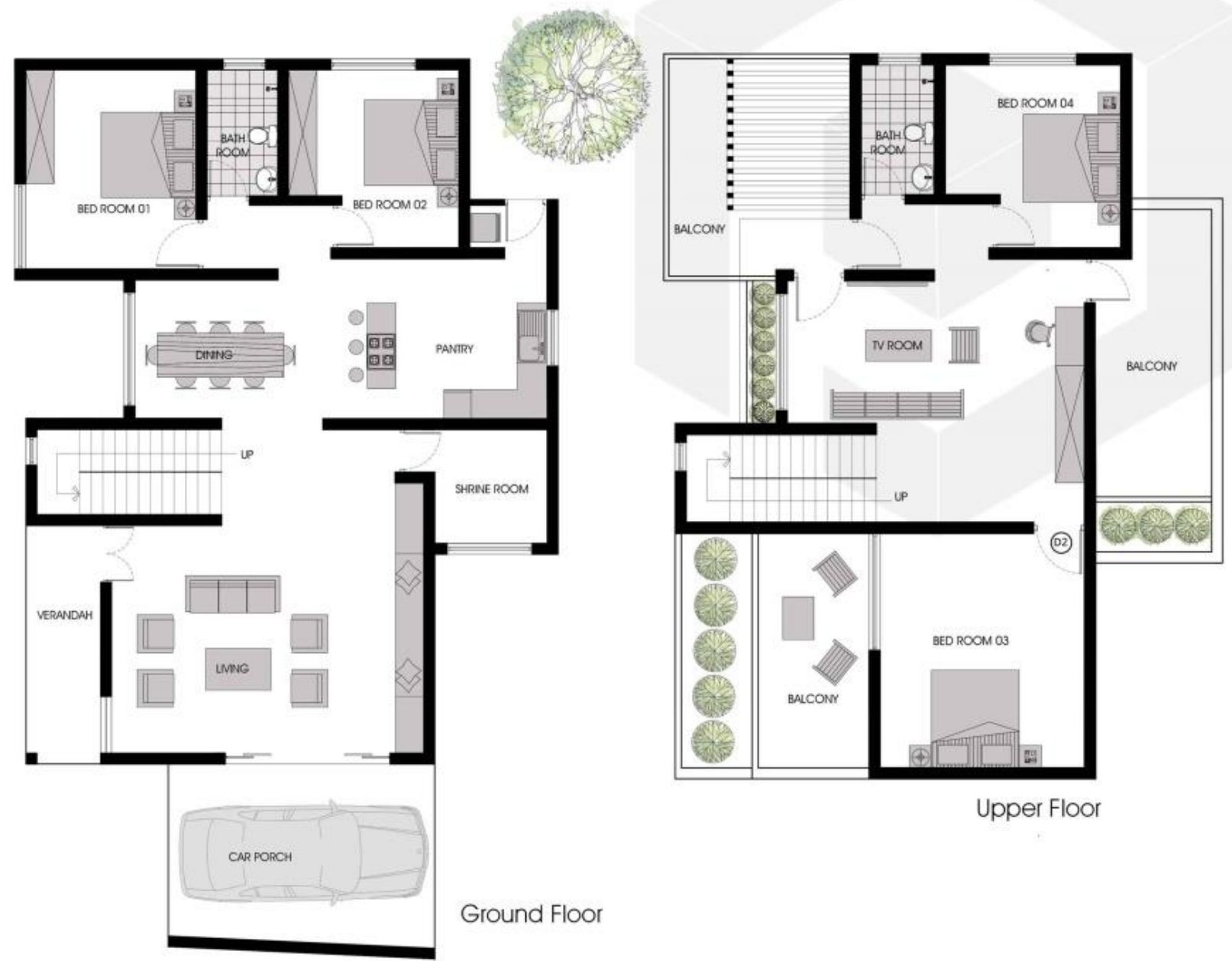


## 01 .Moon Flower

### ENTERTAIN IN STYLE

Injecting the right balance of style, sophistication and luxury with family-friendly and functional spaces is at the heart of Moon Flower. It highlights architectural ingenuity in every space, providing a relaxed, inviting and inspiring backdrop to memories shared with family and friends or enjoyed alone. The Moon Flower appreciates individuality and responds by providing an abundance of choice in the heart of the home and separate, private havens that prompt family members to simply relax and enjoy the unique way they love to live.

3487 Sq.Ft



# Moon Flower

60' Length x 28' Width

Living	22' x 22'
Dining	10' x 15'
Bed 1	14' x 12'
Bed 2	12' x 13'
Bed 3	14' x 12'
Bed 4	16' x 14'
Shrine Room	08' x 08'
Bath Room	05 x 09'
Kitchen	10' x 15'
TV Room	18' x 20'
Garage	16' x 14'

■ Lintel Height 8'-6" and Windows - Alum / Timber

Note : Minimum Frontage Required: 60'-0"





## 02. Camellia

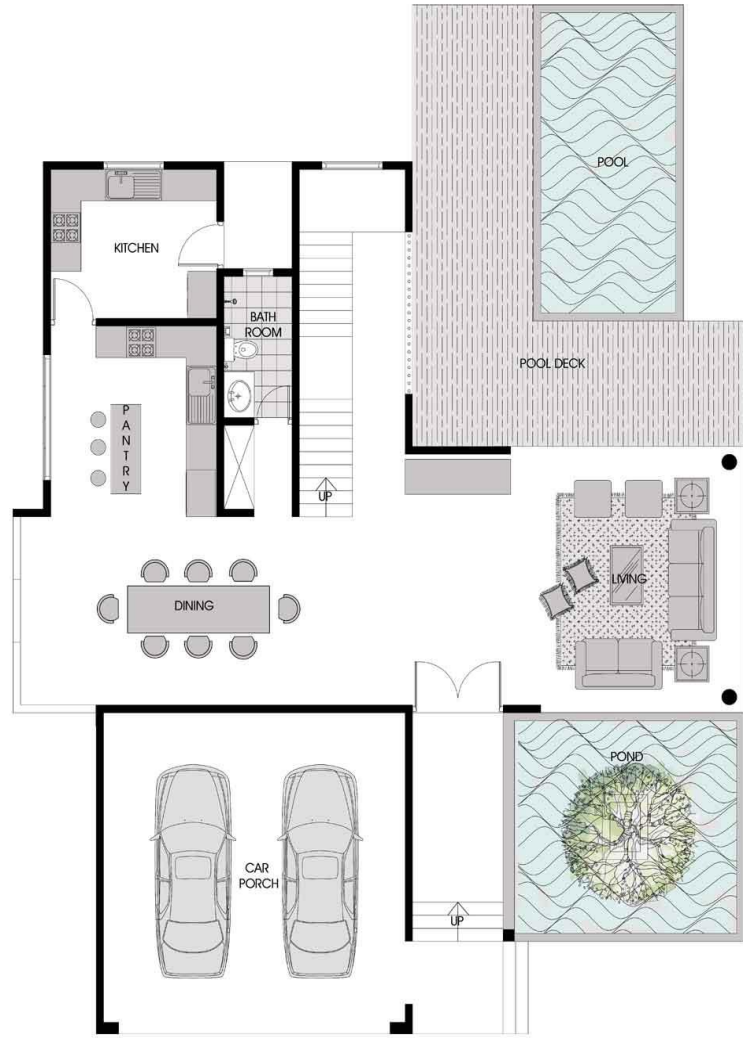
### SOPHISTICATED ELEGANCE

These creamy, fragrant roses are beloved for their incredibly gorgeous look. This magnificent home is gorgeous just as the name suggests, and we know that families want it all when it comes to modern day living; huge spaces for entertainment and private areas that cater to every family member. Introducing the two storey Camellia, a home which proves that you can indeed have it all, even on a smaller lot. The Camellia can be adjusted to your needs and we promise you that every member of the family will be well catered for in it.

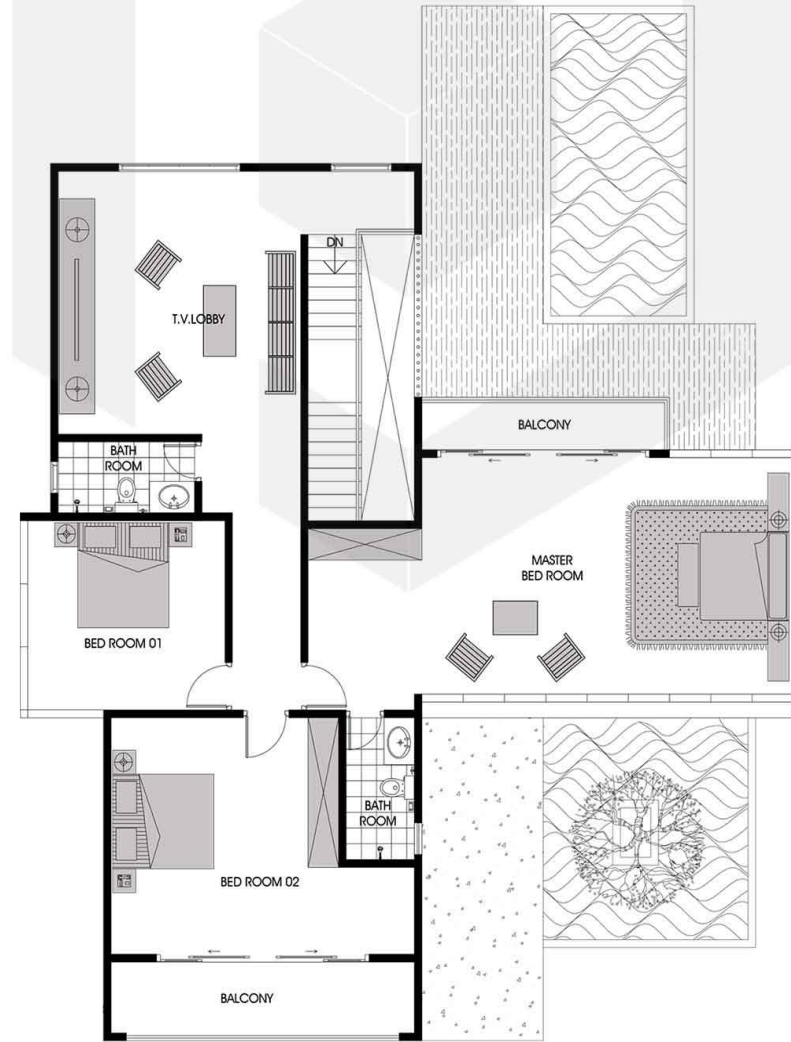
3612 Sq.Ft



# Camellia



Ground Floor



Upper Floor

56' Length x 52' Width

Living	16' x 23'
Dining	12' x 20'
Pantry	11' x 12'
Kitchen	10' x 11'
T.V Lobby	16' x 17'
M. Bed	15' x 25'
Bed 1	12' x 14'
Bed 2	15' x 15'
Bath Room	05' x 09'
Garage	16' x 14'

■ Lintel Height 8'-6" and  
Windows - Timber



Note : Minimum Frontage Required: 64'-0"





## 03. Belladonna

DREAMS MADE REAL

From the vibrant living hub on the ground floor to the private oasis above, the two storey Belladonna perfectly accommodates the changing needs and desires of growing families. From the moment you walk through the front door you will feel that there is something truly special about the Belladonna. This stylish home offers two breathtaking storeys of innovative design characterized by spaces that create the perfect blend between sophistication and functionality. The Belladonna has been cleverly crafted by our architects to create the perfect balance between areas for leisure and relaxation with those for socializing and coming together. The upper level is all about giving your family the freedom and space to rejuvenate at the end of the day

4528 Sq.Ft

# Belladonna

72' Length x 40' Width

Living	15' x 16'
Family Li.	12' x 13'
Dining	14' x 15'
Pantry	14' x 15'
Kitchen	16' x 14'
Utility	06' x 08'
Store	06' x 08'
Theater	12' x 13'
M. Bed	16' x 14'
Closet	06' x 12'
Bed 1	12' x 12'
Bed 2	12' x 16'
Bed 3	12' x 12'
Bed 4	12' x 20'
Study Nook	07' x 13'
Kitchen	16' x 14'
Garage	16' x 14'

■ Lintel Height 8'-6" and Windows - Alum / Timber



5 3 2

Note : Minimum Frontage Required: 54' -6"





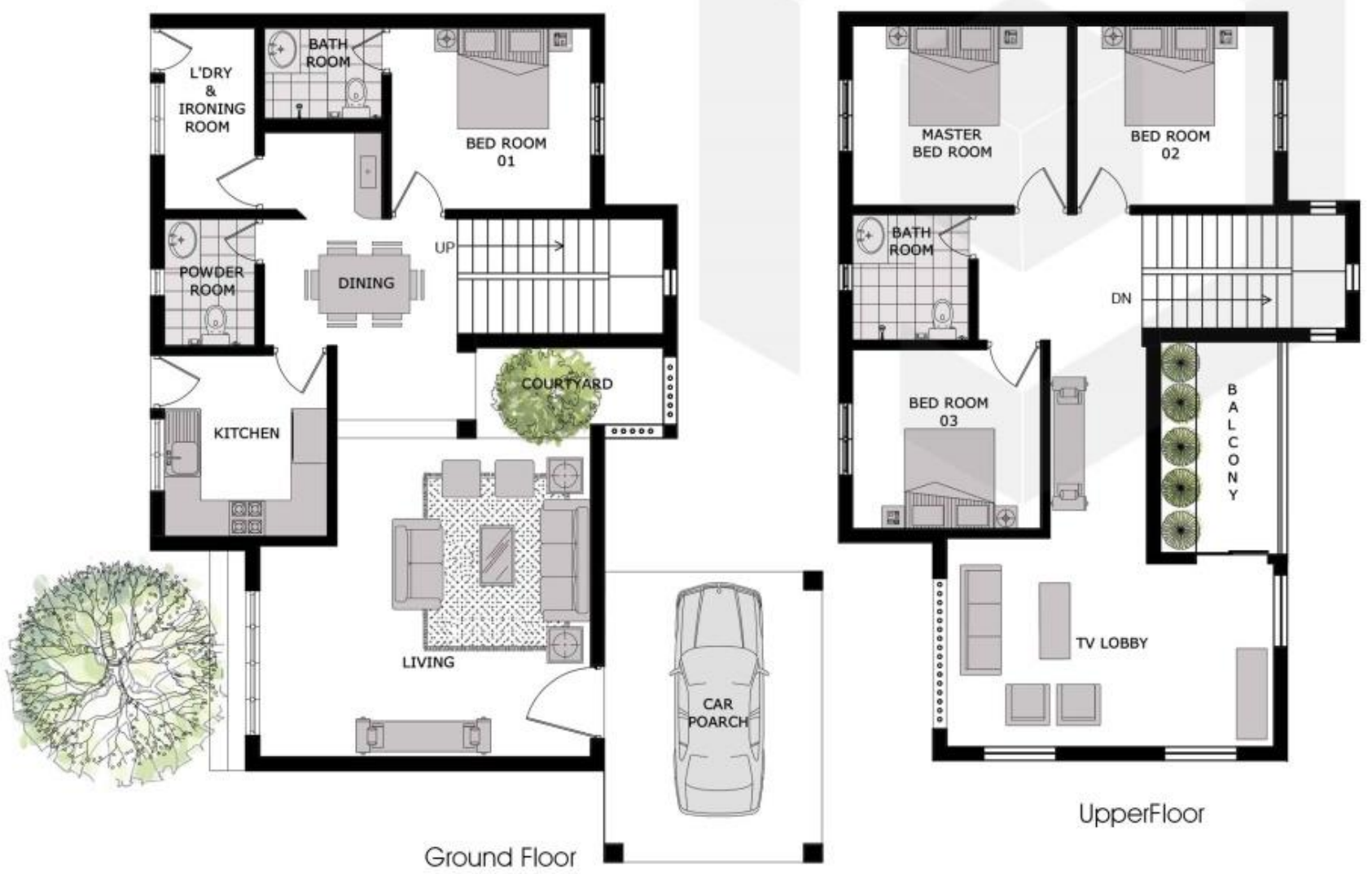
## 04.Primrose

### REAL LIFE FAIRYTALE

The beautiful Primrose is a classical flower which is known for its large, soft colour petals. The calming colours of this flower is beautifully reflected in this mesmerizing design and it impressively ticks all the right boxes for growing families looking to enjoy exceptionally large living, all on a smaller block. Artistically crafted to provide all the essentials for modern family living plus the little luxuries to match, this outstanding design appreciates your location by offering the perfect balance between the elegance and luxury. Smartly zoned, the Primrose offers a lower level brimming with spaces for coming together and the upper level complements the perfect retreat from the daily rhythm.

2253 Sq.Ft

# Primrose



47' Length x 37' Width

Living	18' x 18'
Dining	07' x 11'
M. Bed	16' x 14'
Bed 1	10' x 11'
Bed 2	10' x 11'
Bed 3	10' x 11'
Beth Room	05' x 07'
Kitchen	16' x 14'
TV Looby	08' x 11'
Kitchen	09' x 10'

■ Lintel hight and Door Windor Details





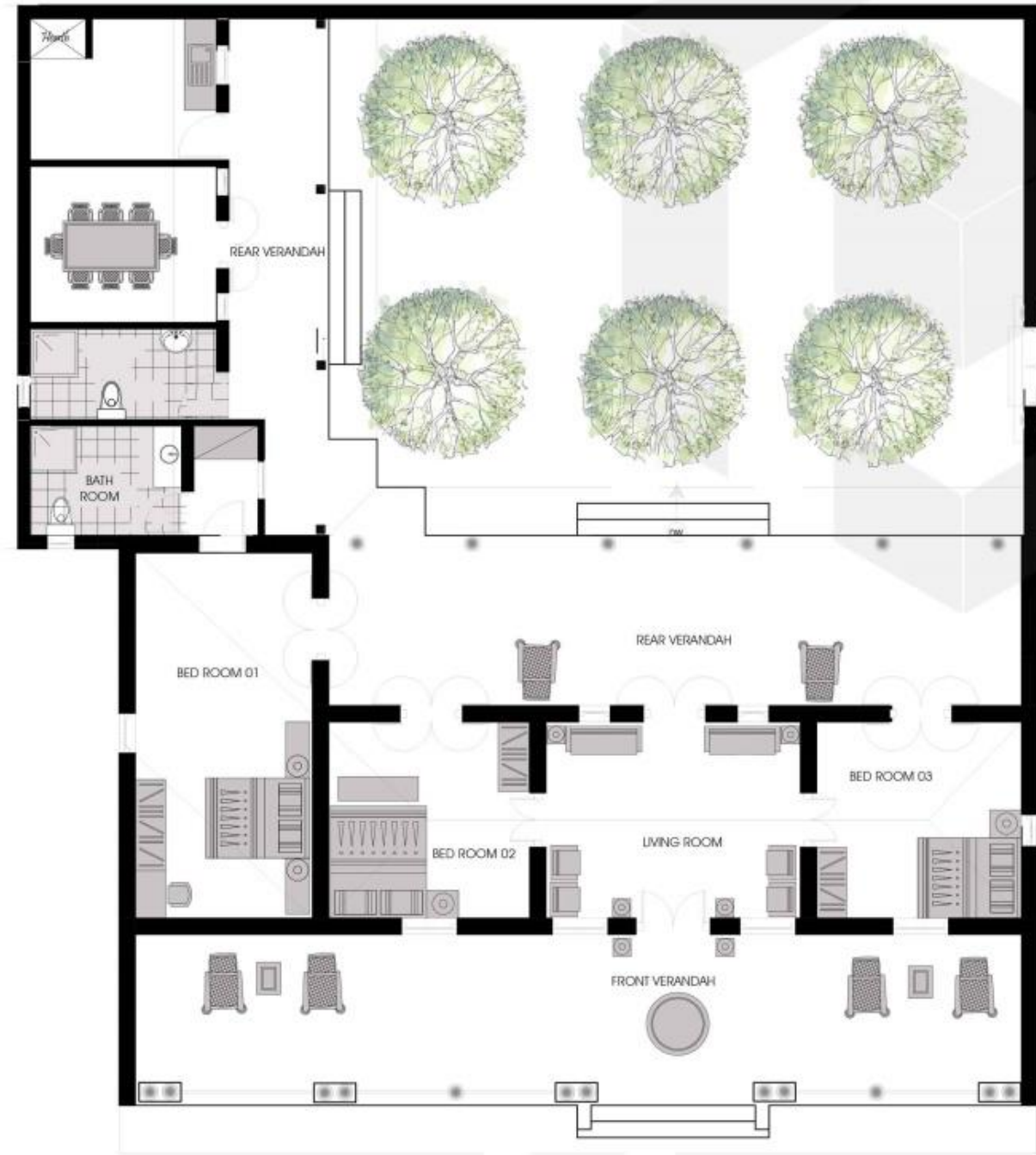
## 05.Snowdrop

### ELEGANCE REDIFINED

The Snowdrop is the first flower of the year, and a sign that winter is transforming to spring, hence, making it a symbol for hope that new warmth will enter the life. This warm and welcoming design, the Snowdrop will give you new hopes and dreams once you make it your home. When it comes to clever designing, you cannot look past the exceptional flow, outstanding architectural elements and smart use of space offered by the Snowdrop. This stunning, elegant home is all about offering all the best features of modern day living in a way that caters to a family that adore a dainty and comfortable home. The Snowdrop can be easily catered to the movement of day to day life, no matter where it takes you.

2710 Sq.Ft

# Snowdrop



68' Length x 64' Width

Living	15' x 12'
Dining	12' x 10'
Bed 1	16' x 14'
Bed 2	16' x 14'
Bed 3	16' x 14'
Bath Room	07' x 09'
Bath Room	12' x 06'
Kitchen	12' x 09'
Verandah	57' x 11'

■ Lintel Hieght 8'-6" and  
Windows - Timber





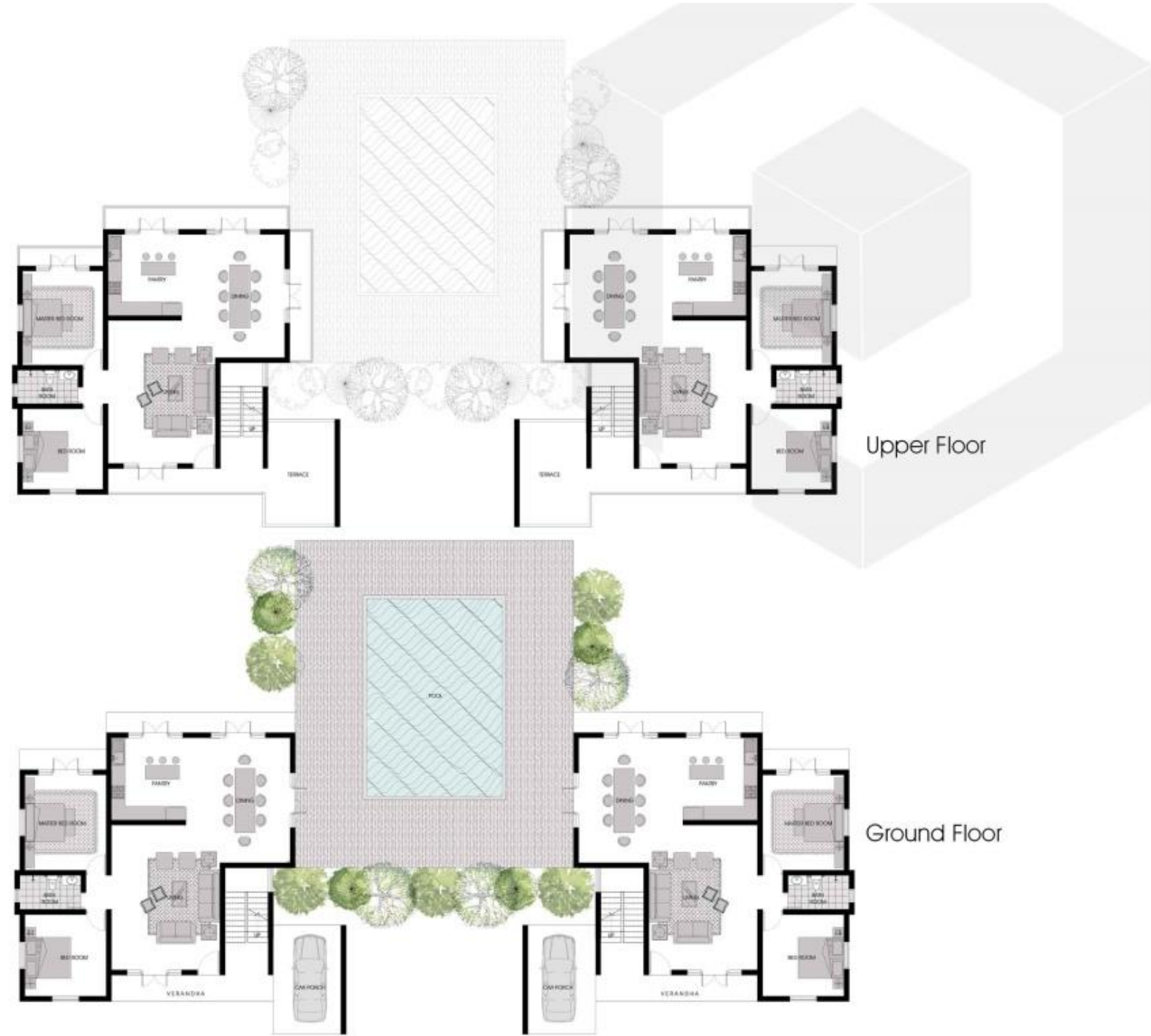
## 06.Lilac

SIMPLICITY AT ITS' BEST

Lilac is a delicate little flower which stands as an expression of so many emotions including happiness, tranquility and also first love. Fall in love with this stunning architectural wonder and happiness and tranquility will always follow love. It is the extra little considerations in the Lilac that make living in this home a truly special experience. The innovative and modern twist of this design offers an additional level of luxury to enrich your lifestyle options. While functionality is at the heart of this clever design, your family's needs today and overtime have been our inspiration..

3534 Sq.Ft





## Lilac

48' Length x 48' Width

Living	16' x 21'
Dining	15' x 18'
Pantry	11' x 12'
M.Bed 1 & 2	12' x 14'
Bed 1	12' x 12'
Bath Room	05' x 09'
Garage	10' x 16'
Pool	20' x 30'

■ Twins House Concept



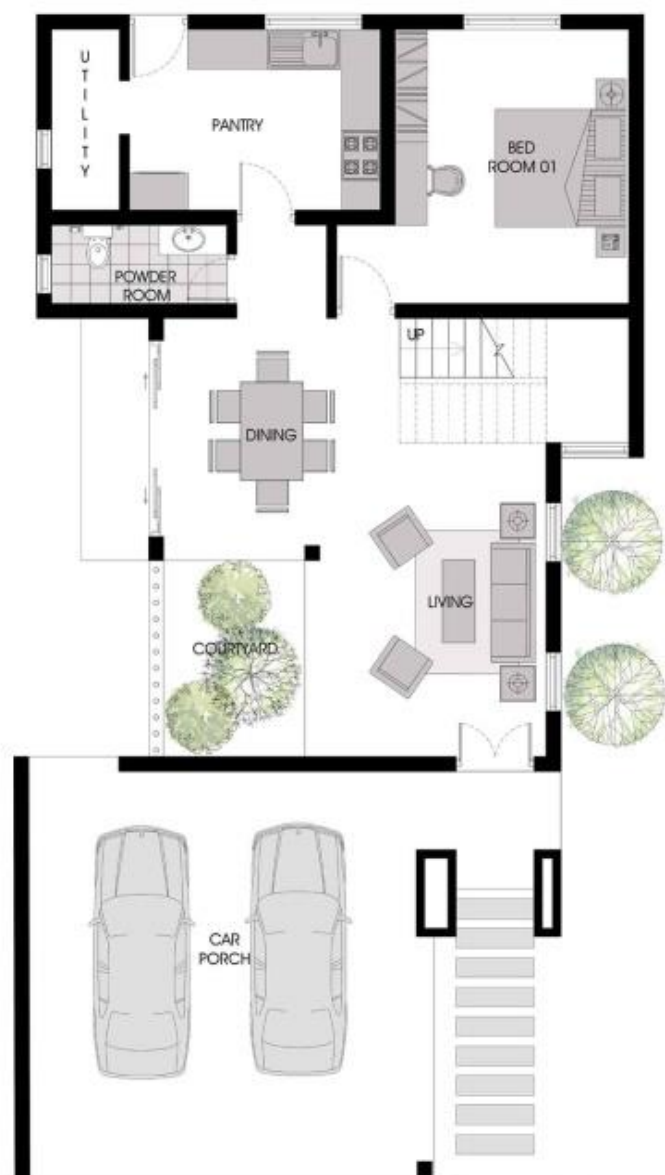


## 07.Acacia

### ETERNAL SOPHISTICATION

Acacia flower is small but mighty. It is a symbol of love, friendship and elegance. And we give you the perfect example for elegance in the Acacia design. This relatively small but spacious house is the perfect getaway for your loved ones and friends. With a parking space for two cars, the Acacia makes living a truly special experience. This home is cleverly designed to provide an uninterrupted flow across two striking levels of architectural design, ensuring that your ability to enjoy all the best aspects of modern day living no matter your lot size or desired location. The upper level balcony adds to the modern beauty of the Acacia, and it will be a mesmerizing experience to live in it.

3040 Sq.Ft



Ground Floor



Upper Floor

# Acacia

60' Length x 32' Width

Living	13' x 16'
Dining	14' x 15'
TV Lobby	12' x 15'
Utility	04' x 09'
Pantry	09' x 12'
Powder Ro.	04' x 09'
M. Bed	12' x 14'
Closet	07' x 08'
M. Bed	08' x 09'
Bed 1	12' x 14'
Bed 2	11' x 12'
Bed 3	12' x 12'
Bath Room	05' x 12'
Study Nook	06' x 10'
Garage	20' x 20'

■ Lintel Height 8'-6" and  
Windows - Alum / Timber





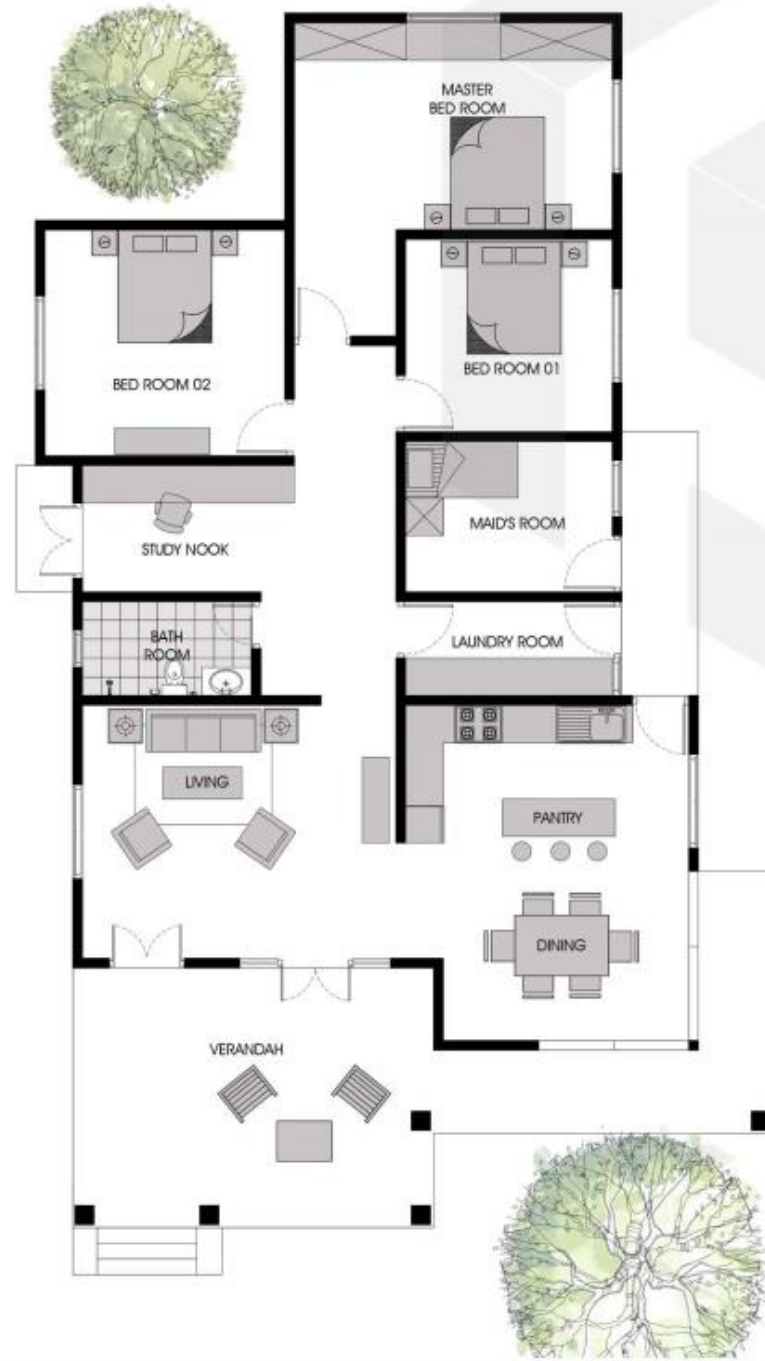
## 08. Cassia

### ELEGANT GRANDUER

From the moment you step into Cassia's generous entry you will appreciate this stylish design for how much it will enhance the way that your family lives and entertains. Cassia celebrates the magic formula for exceptional, modern family living over one breathtaking level. This home genuinely understands your family's daily needs and confidently responds with the perfect interplay between spaces for privacy and areas for sharing and gathering. Everything you could desire for luxurious living and easy, sophisticated entertaining in your dream home is easily at your fingertips in Cassia..

1982 Sq.Ft

# Cassia



65' Length x 35' Width

Living	14' x 17'
Dining	10' x 13'
Pantry	08' x 15'
M, Bed	11' x 17'
Bed 1	10' x 11'
Bed 2	12' x 13'
Bath Room	05' x 09'
Study Nook	07' x 11'
Laundy	05' x 11'
Maid's Ro.	08' x 11'

■ Lintel Height 8'-6" and  
Windows - Timber





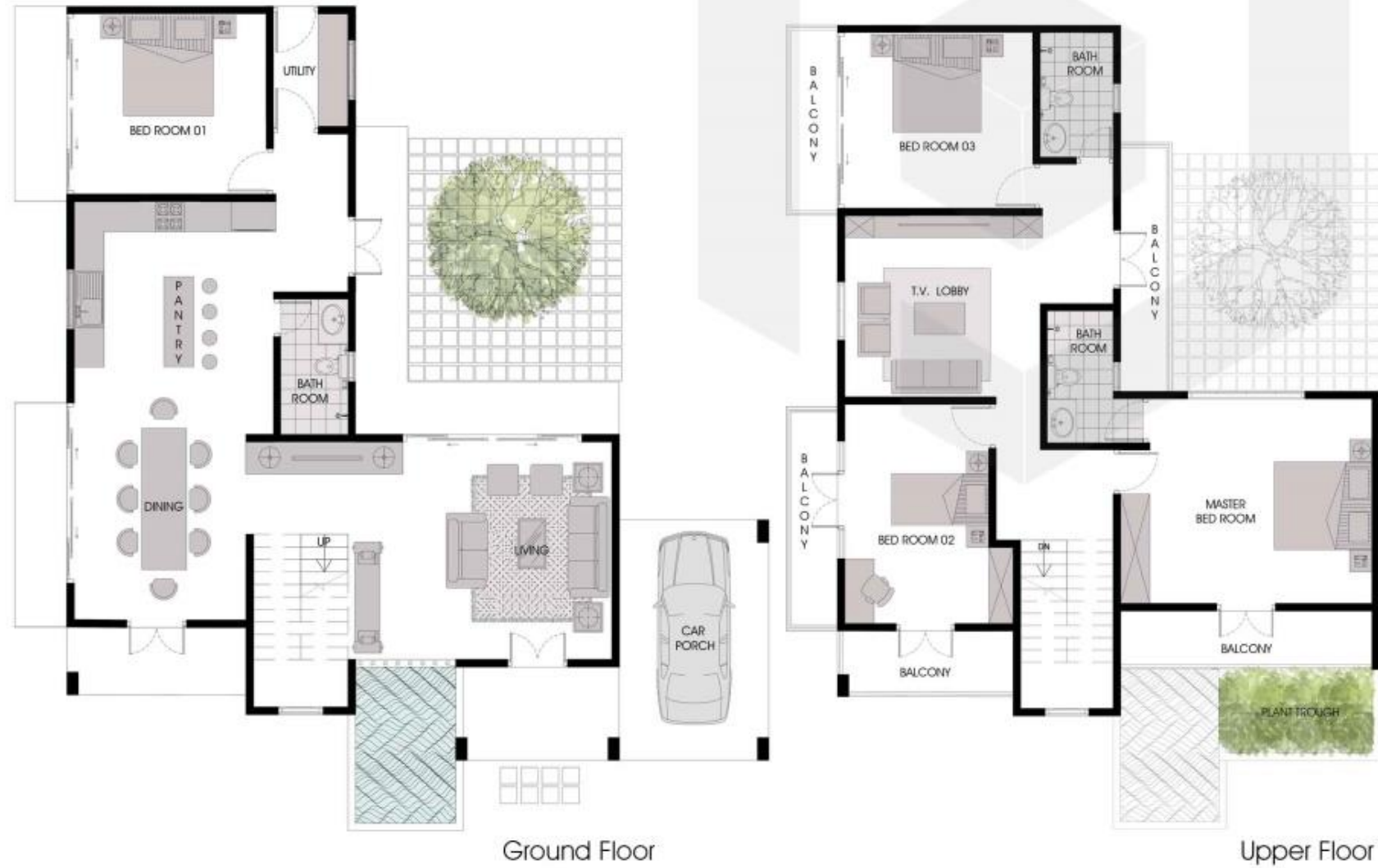
## 09.Heather

### UNMATCHED BEAUTY

This cluster of small flowers is said to represent good luck and they are also believed to have protective powers. Feel blessed and protected in this stunning four bedroom town house offered by us, surrounded by your loved ones. The Heather is prepared for every twist and turn of the urban lifestyle, and is an innovative approach to modern living. Perfect for families who are used to a busy, modern lifestyle, the Heather will provide all the essentials for your whole family with its impressive space usage and elements which can be transformed to suit your unique needs and dreams

3074 Sq.Ft

# Heather



50' Length x 50'-6" Width

Living	14' x 18'
Dining	12' x 16'
Pantry	11' x 14'
Utility	05' x 07'
T.V. Lobby	12' x 13'
M.Bar Room	14' x 17'
Bed 1	12' x 13'
Bed 2	10' x 15'
Bed 3	12' x 13'
Bath Room	05' x 09"
Garage	10' x 16'

■ Lintel Height 8'-6" and  
Windows - Alum / Timber

Note : Minimum Frontage Required: 58'-0"





## 10.Aster

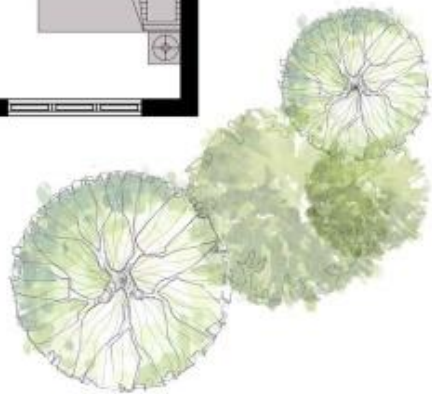
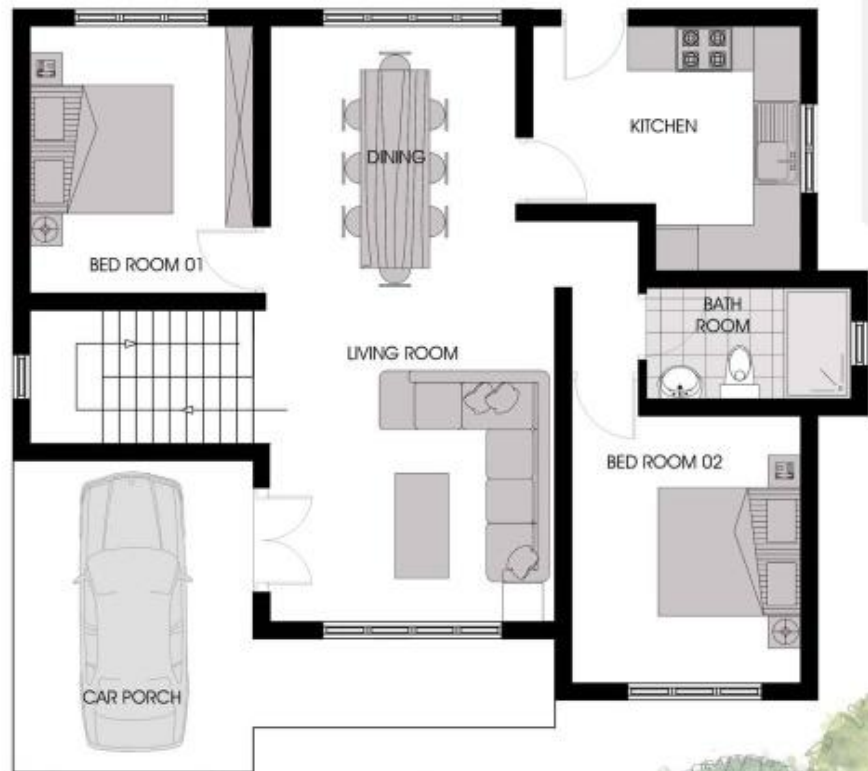
TRADITIONALLY UNIQUE

Asters, with their wildflower beauty and lush texture, are considered as an enchanted flower that can drive away evil from people's lives. The Aster will make your life enchanted with its uniquely and stylishly combined family living essentials. The Aster incredibly fits four lavish bedrooms, a garage and all the desired features of a modern family. Our innovative architects have outdone themselves in designing this charming home, which offers a winning formula when it comes to balancing well positioned areas for relaxation and privacy. The Aster provides a perfect destination no matter wherever your passion takes you.

1909 Sq.Ft



# Aster



35' Length x 29' Width

Living	15' x 13'
Dining	12' x 12'
Bed 1	12' x 10'
Bed 2	12' x 11'
Bed 3	12' x 11'
Bed 4	12' x 11'
Bath Room	05' x 09'
Kitchen	11' x 12'
Garage	10' x 16'

■ Lintel Height 8'-6" and  
Windows - Alum / Timber



Note : Minimum Frontage Required: 38'-0"





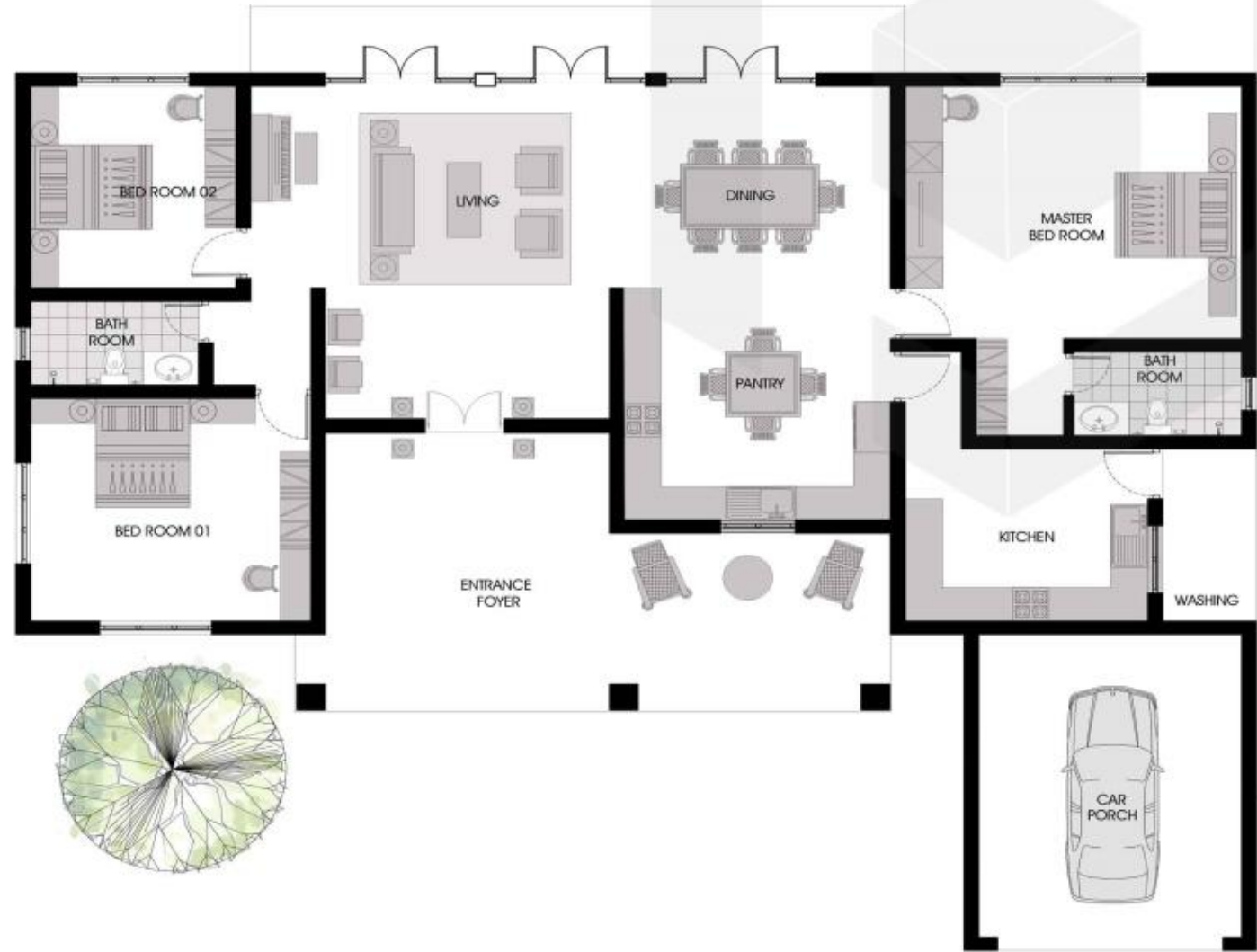
# 11.Laurel

## COMFORT IN STYLEE

The name 'Laurel' is associated with triumph, success and victory. Why else would Caesar wear a wreath made of Laurel? You will definitely feel a sense of accomplishment when you call this stunning design your own. When it comes to unique and stylish modern architecture, the Laurel shakes things up a little. The elegant single storey home is beautifully designed to offer the perfect luxury to you and your loved ones. From the living hub to the private, quiet haven, the Laurel meets all the requirements for exceptional, modern family living.

2779 Sq.Ft

# Laurel



66' Length x 56' Width

Entance Foyer	15' x 16'
Living	19' x 20'
Dining	16' x 14'
Pantry	10' x 14'
Kitchen	16' x 14'
M. Bed	15' x 18'
Bed 1	13' x 15'
Bed 2	11' x 12'
Bath Room	05' x 09'
Washing Area	05' x 07'
Garage	14' x 18'

■ Lintel Hieght 8'-6" and Windows - Timbers





## 12. Briar-Rose

STYLISHLY SIMPLE

Did you know that Sleeping Beauty's name was actually Briar-Rose? The name was given to her by fairies because of the incredible beauty. Our Briar-Rose home design is beauty redefined. The Briar-Rose is more than just a well thought-out home, it is a considerate design dedicated to the treasured beings it will keep safe. The Briar-Rose showcases the best in contemporary architectural innovation and is cleverly designed to offer two levels filled with inspiring spaces to suit today's needs. This home makes an impressive statement about modern living from the stylish and sophisticated design. Adaptable to every modern family's budget, location and lifestyle, the Briar-Rose's architectural merits and intricacies prove you really can enjoy a spacious free-flowing home.

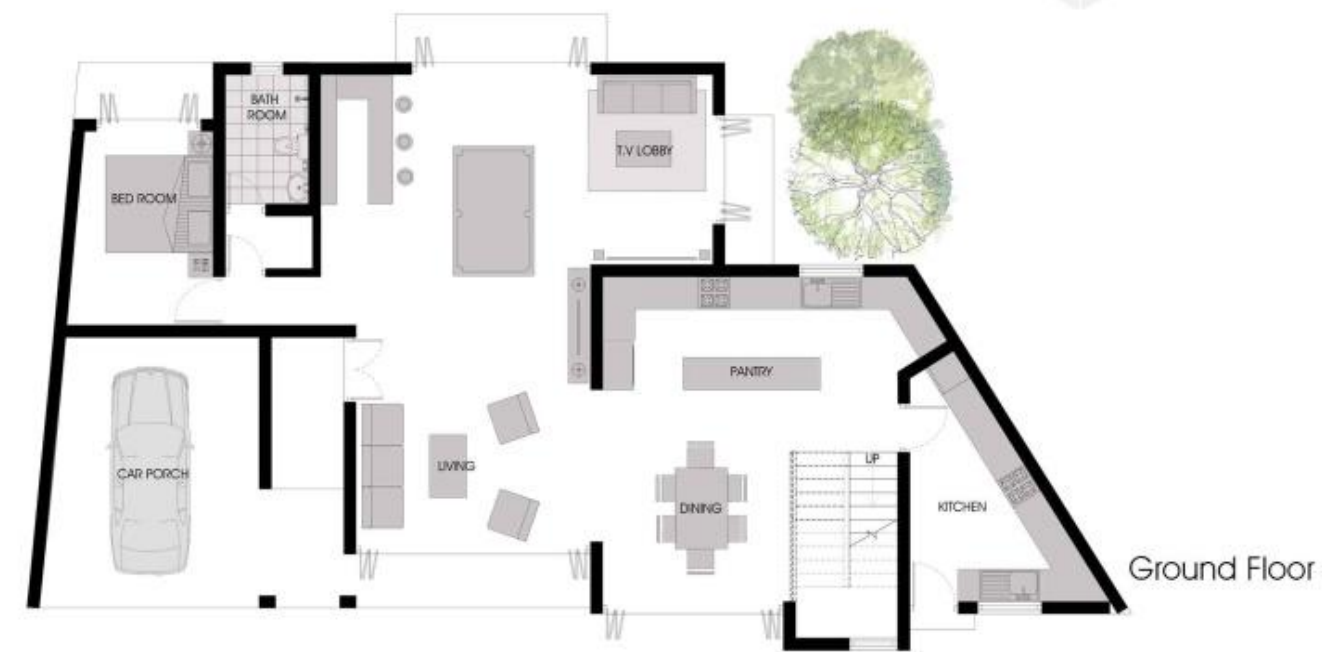
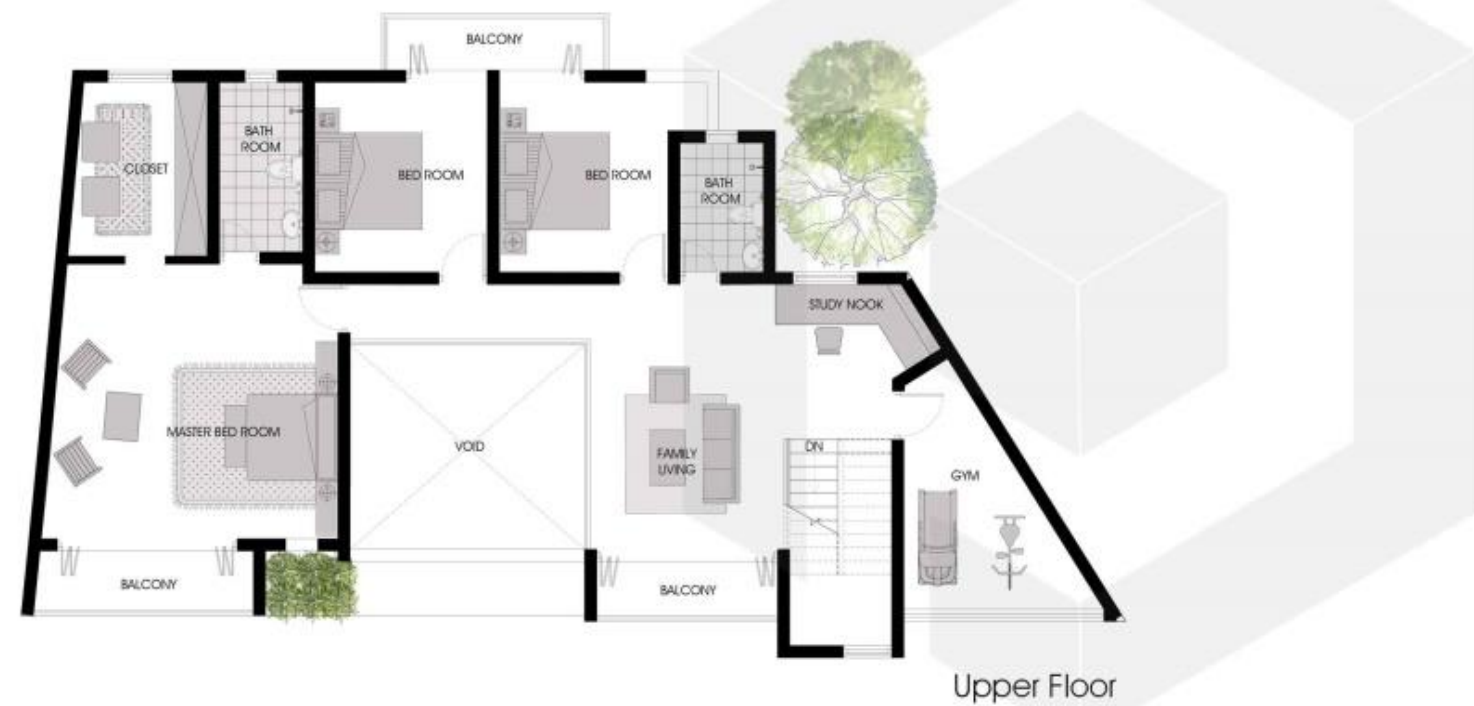
4735 Sq.Ft

# Briar-Rose

72' Length x 34' Width

Living	15' x 16'
Dining	12' x 13'
Bar & Play Ar.	13' x 16'
M. Bed	13' x 16'
Closet	08' x 10'
M. Bath	05' x 11'
Bed 1	10' x 12'
Bed 2	11' x 12'
Bed 3	11' x 12'
Family Liv.	11' x 16'
Pantry	08' x 17'
Kitchen	07' x 10'
Garage	16' x 14'
Study Nook	06' x 07'
Bath Room	05' x 08'
Gym	07' x 12'

■ Lintel hight and Dor Windor Details





**| Paxcell |**  
**HOLDINGS**

47/1/1, Kandy Road,  
Dalugama, Kelaniya,  
Sri Lanka.

011 2 99 12 39 / 011 2 99 13 39  
070 350 80 80 / 070 350 40 30

[www.paxcellholdings.com](http://www.paxcellholdings.com)